



Electronic BluetoothLE Based Access Control System

www.myreky.com

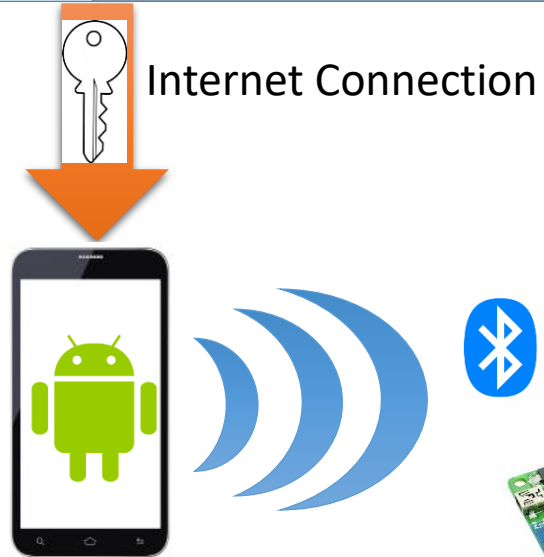
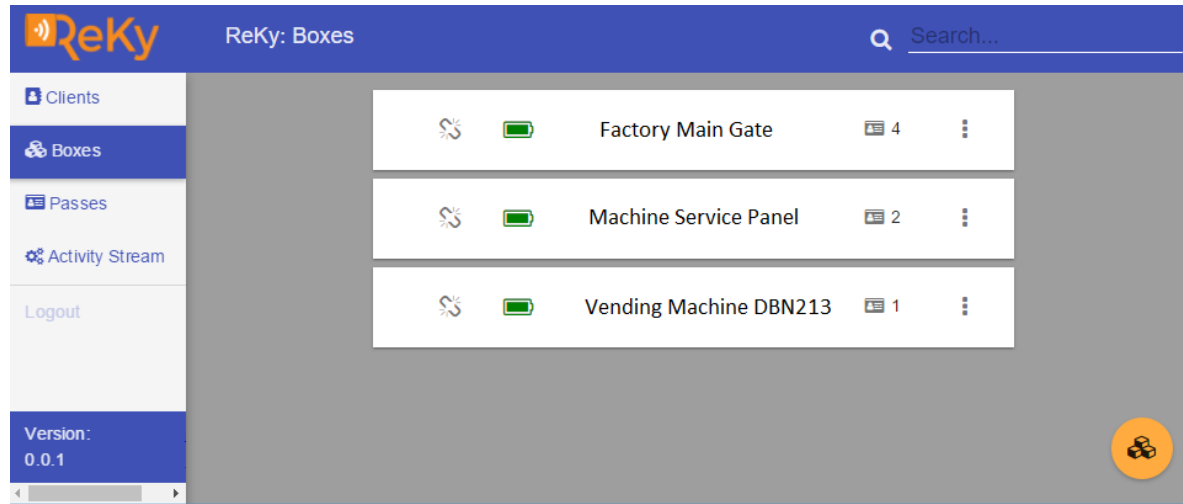
Challenges in Security Industry



- CIT Industry (Cash in Transit)
 - Physical key management is problematic
 - Cost of key management consumables (Seals & Bags) is significant
- Reaction Industry (Armed Response)
 - Property owners unwilling to allow security companies unbridled access to premises
 - Limited access to premises degrades service offering
 - Pedestrian strike lock access keypad codes are easily bypassed
- Technical Service Industry (incl Vending Machines)
 - Certain areas/devices need to be opened with a key
 - Obtaining key from client is sometimes not possible unless arranged in advance



General Overview of System



 **Bluetooth®**



Differentiating Factors

- Most Bluetooth™ smart locks are standalone devices
 - Focussed on the individual not an organisation
- Most IP based locks operate on a WAN and are as secure as the company network security policy
- Established one time pin (OTP) electronic lock suppliers are costly and only available to large banks and CIT providers.
- Bluetooth Access vs IP/WiFi Access
 - Bluetooth™ requires the operator to have access to the area (+/-10m) that the lock is installed.
 - IP/WiFi locks can be opened from anywhere in the world.



Key Features

- Seamlessly Blends Cloud Based Access Control Systems with Electronic Locks
- ReKy Passes can be Revoked Instantly
- Granular Control
 - One device can operate many locks (Hub-and-Spoke Access)
 - Two devices can operate one lock (Dual Access)
 - ReKy passes can be granted access by time (Window Period Access)
 - ReKy Passes can expire (One Time Use Pass)
- Centralised Control of Passes Through Web Platform
 - Cloud managed keys (Reky Access Pass)
 - Smartphone device operates only as a key
- ReKy Infrastructure Costs are Low
 - Smartphones are used to request access thereby eliminating GSM Modems from outlay
 - The ReKy module is designed to integrate into existing access control hardware
 - Automatic gate motors
 - Strike locks
 - Alarm systems
- Designed and Developed in South Africa for South African Security Requirements

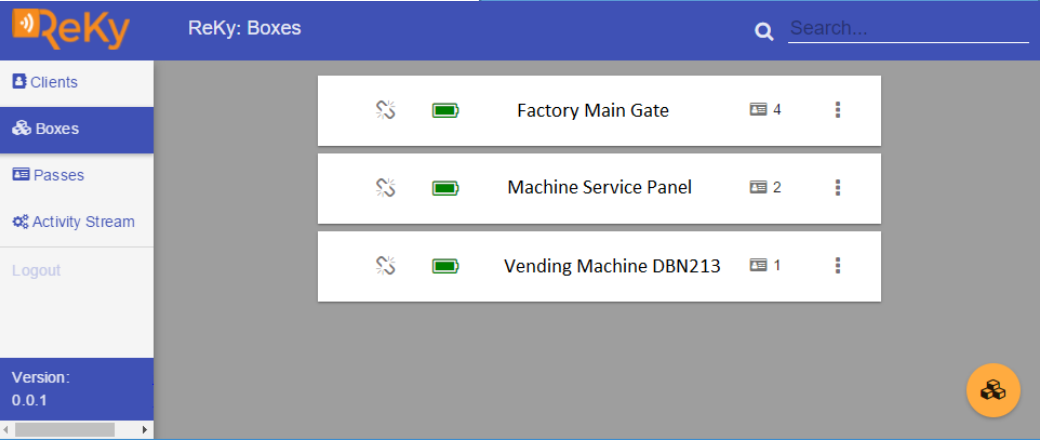
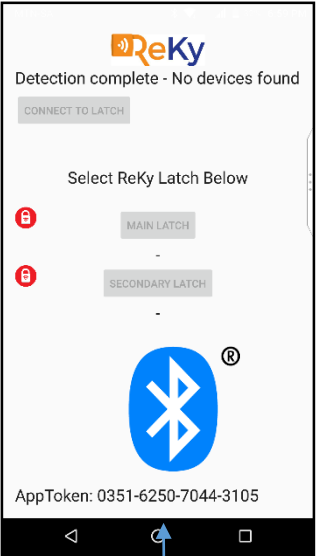


Operational Overview

Mobile Phone:
Access Key
S.Secure Mode (Online)
or Secure Mode (Offline)

Web Service Comms: SSL SHA-256
Verification Process

Web Portal:
Management Access



App Issues 3AES Access Instruction over
Bluetooth LE link at <10m Range

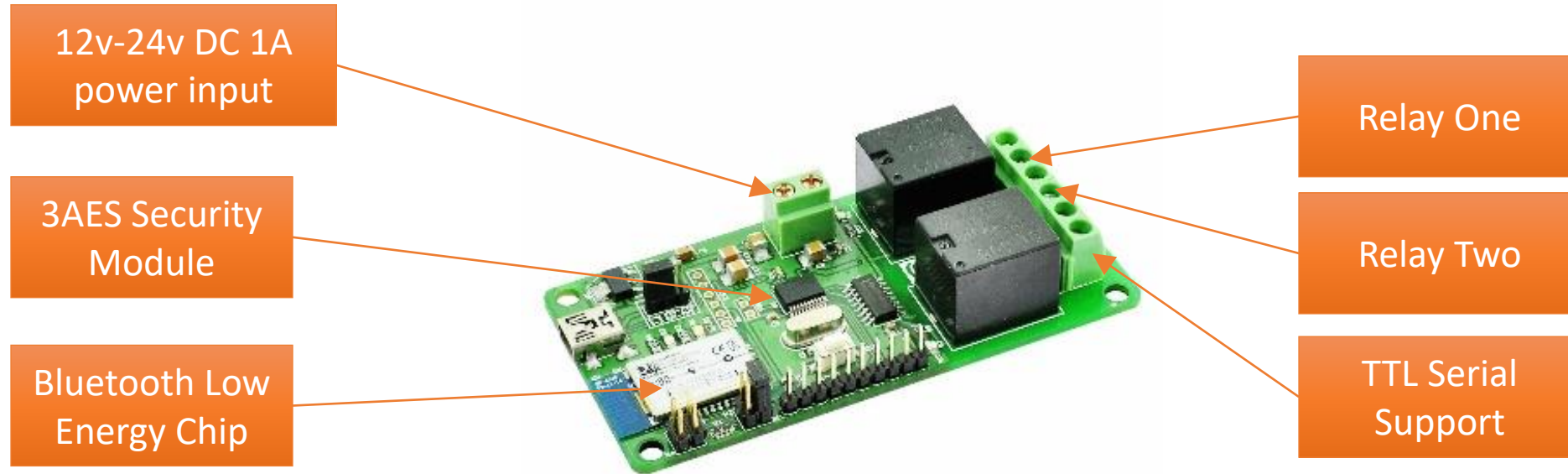


Output
Access Granted: Electronic
device is opened

Lock/Access Control Device



Board Security Features



Web Portal Features

ReKy: Activity Stream

The activity stream refreshes every 10 seconds...

Time	Activity	User	Device	Box	Location
4 October 2017 11:44:46	L1- OFF				
4 October 2017 11:44:43	L1- ON				
4 October 2017 11:43:36	L1- ON				
4 October 2017 11:43:36	L1- OFF				
4 October 2017 11:43:34	L1- ON				
4 October 2017 11:18:03	L1- ON				
4 October 2017 11:18:01	L1- OFF				
4 October 2017 11:17:56	L1- ON				
4 October 2017 11:16:45	L1- ON				

Activity Stream
Comprehensive Access
Audit Trail-
Which devices opened
what lock and when

Box: Kohler Home

Serial: App User ID: 2

Advert ID: Access Id

Time from: 00:00 Time to: 23:59

Never Expire

Access Relay 1 Access Relay 9

Access Relay 2 Access Relay 10

**Various Access Conditions
of Access Can Be Set**



Web Portal Features (Continued)

The screenshot shows the 'ReKy: Boxes' web portal. The interface includes a top navigation bar with the ReKy logo, the title 'ReKy: Boxes', and a search bar. A left sidebar contains navigation links for 'Clients', 'Boxes', 'Passes', 'Activity Stream', and 'Logout'. The main content area displays a list of ReKy units with columns for battery status, site name, and the number of passes linked to the unit. Callout boxes highlight specific features: 'Low Battery Indicator' points to a red battery icon; 'Site Name' points to the unit name 'Kohler Home'; 'Edit Box Details' points to a three-dot menu icon; and 'Number of Phones (Passes) Linked to ReKy Unit' points to the pass count '2'.

Battery Status	Site Name	Number of Phones (Passes) Linked to ReKy Unit
Low Battery (Red)	eeeeeeeeeeee	0
Full Battery (Green)	Kohler Home	1
Full Battery (Green)	KWK Suitcase	2
Full Battery (Green)	New Suitcase	1
Full Battery (Green)	Suitcase	2



Pricing Overview

- ReKy Hosted System
 - Customers/Users access a server hosted and operated by ReKy
 - Monthly or Annual fee per box in operation
 - Android App download is free
 - iPhone support not currently available (in development)
 - Hardware devices purchased from ReKy are preloaded on web portal
 - Suitable for:
 - Armed response companies clients
 - Alarm installers
 - Home automation applications
 - Vending machine operators
 - Guest house visitor access



Thank You

www.myreky.com